

November 18, 2021

# VIRTUAL FAMILY MAKER NIGHT



**PATHMAKERS**  
Make your path to the future.

# Welcome to Family Maker Night!

## We will start at 5:30pm with our first presentation.

Please open the HCOE Family Maker Night Website for information on tonight's meeting while you wait.

<https://hcoe.org/family-maker-night/>

### Get your Zoom Room set up.

Set up your view (top right corner). We recommend "Side-by-Side Speaker view"

Your mic will remain muted and please keep your camera off - direct questions to the chat

**Configure su salón de Zoom.** Elija su "Canal" de interpretación: inglés o español (el "icono del mundo" en la parte inferior)  
Configure su vista (esquina superior derecha). Recomendando "vista de orador" Tu micrófono permanecerá silenciado y mantén la cámara apagada.



**PATHMAKERS**  
Make your path to the future.

# Land Acknowledgement

Pathmakers serves students in the unceded territories of the Yurok, Hupa, Karuk, and Wiyot Nations. Blue Lake Rancheria is within traditional Wiyot land. I am presenting from Jaroujiji (*Eureka*), which is also on traditional Wiyot Land. We at Pathmakers believe that land acknowledgments without action are merely performative, so we will provide you all with webpages and social media pages to follow.



**PATHMAKERS**  
Make your path to the future.

# Tonight's Presentation Schedule:

5:15 – 5:30 | Login and Get Comfortable

5:30 – 6:00 | Cultural Fire is Good Fire, hosted by:  
Merry Kate, Elizabeth Azzuz (Culture Fire Management Council)  
Skip Lowry (Sue-meg State Park)

6:00 – 6:30 | MakeSpace Activity  
hosted by Miss S., Pacific Union



**PATHMAKERS**  
Make your path to the future.



# Meet the Pathmakers Team



**Marlee Chavez**



**Kate Lowry**



**PATHMAKERS**  
Make your path to the future.

# Pages to follow:



Follow your school's Indian Education Facebook Page!



**PATHMAKERS**  
Make your path to the future.



# NATIVE S.T.E.A.M.





# SCIENCE







# TECHNOLOGY





# ENGINEERING







TRADITIONAL  
ECOLOGICAL  
KNOWLEDGE IS...



MATH

# Big Questions:

**What is Cultural Fire?**

**Why is it important?**



**PATHMAKERS**  
Make your path to the future.





“The tribal peoples along the Klamath River, the Yurok, Hupa, and Karuk, use fire to dictate what kinds of plants we grow there, what species, how they grow, when they grow. They were handled with Fire”



**PATHMAKERS**  
Make your path to the future.





**Cultural Fire = Good Fire**



# Language of the Land, Traditional Use of Fire

*with Margo Robbins*





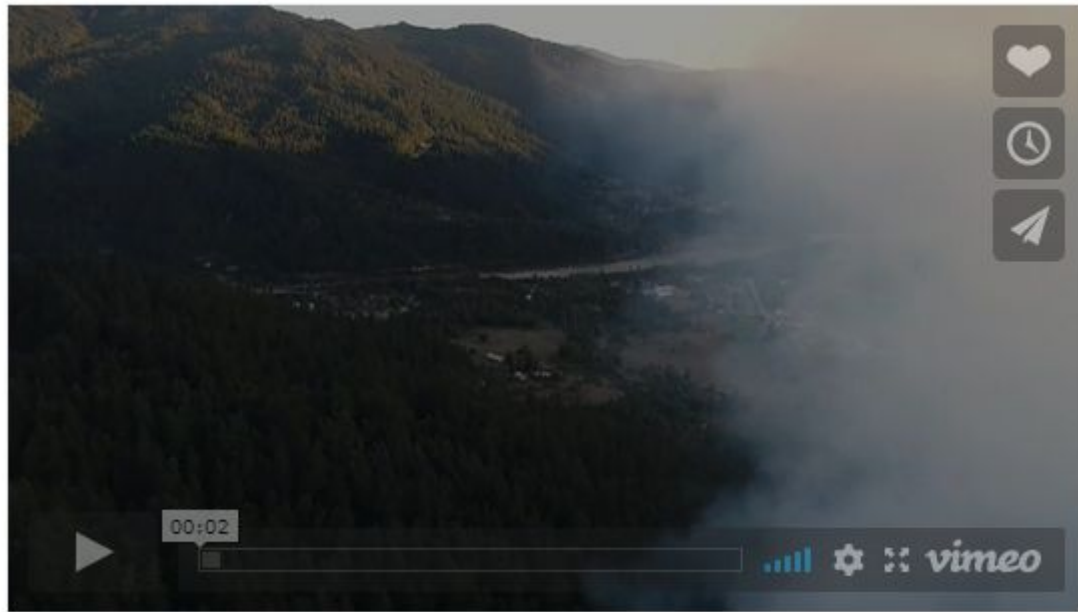


Kathy McCovey, a member of the Karuk tribe, holds a baby basket made from local plants that benefit from cultural burning.

“Cultural burning helps influence the growth of the plants they use, such as mock orange for arrow shafts, and hazelnut sticks and bear grass used to weave baskets”, she says.



**PATHMAKERS**  
Make your path to the future.



## Learning Fire: In the Klamath Mountains

**PATHMAKERS**  
Make your path to the future.

# Culture Fire Management Council

Introduction by:  
Skip Lowry (Maidu +  
Yurok), CA State  
Parks Interpreter

[skip.lowry@parks.ca.gov](mailto:skip.lowry@parks.ca.gov)







**Elizabeth Azzuz (Yurok)**, Co-Director of Culture  
Fire Management Council, Mother, Grandmother, Fire  
Keeper, Community Leader







## Anatomy of California Flowers



California Poppy  
*Eschscholzia californica*

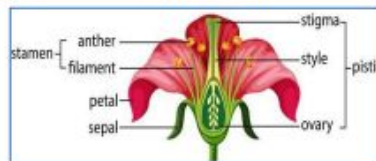


Great Camas  
*Camassia leichtlinii*



Flowers are all made up of the same parts but they are often shaped differently.

Can you spot the different flower parts on these four California native flowers?



Western Trillium  
*Trillium ovatum*



The Stamen, pistil, style, and ovary are the reproductive parts of the flower.

The petals attract pollinators like bees and hummingbirds to the flower.

The sepals protect the ovary as the seeds develop.

Thimbleberry  
*Rubus parviflorus*



Presenting  
Blooming  
Flowers:  
*Miss S. from  
Pacific Union*



**Thank You to our Presenters!**  
**and Thank You ALL for attending this presentation!**

**You will be emailed a request to complete an evaluation of the event.  
We hope you take the time to complete the evaluation,  
as it really improves our system.**

**Recordings of tonight's presentation will soon be  
uploaded to the Pathmakers Pages on the BLR and HCOE websites, please share!**



**PATHMAKERS**  
Make your path to the future.